



Photos: Grant High School bond work in full swing

By: Sam Tenney in Scrolling Box December 20, 2017 2:39 pm

Construction work is in full swing on the last major project funded by **Portland Public Schools'** 2012 School Building Improvement Bond. A joint venture team of **Andersen/Colas Construction** is performing a **McIntyre Architects**-designed upgrade of **Grant High School** that will modernize and expand the school's space while maintaining the historic look of the school, which was originally built in 1923.

Crews began work on the approximately \$150 million project after the school year ended last June, and have completed the mass demolition portion of the job – the razing of five non-historic expansions that were not part of the original structure. Interior demolition and abatement is ongoing and about 80 percent complete.

Construction of a new gymnasium has begun; excavation for the two-story structure is complete, and crews are starting to put down the rock pad for the gym's foundation. The main floor of the new gymnasium is at a level below grade so that the structure fits in with the existing context of the neighborhood without towering over existing structures.

Some temporary shoring has been completed, and crews are excavating for new courtyards. Excavation of new foundations will continue until next January/February, with installation of structural steel set to begin at the end of the month.

Unlike the previously-completed bond-funded renovations of Franklin and Roosevelt high schools and as a result of community input, the auditorium at Grant will remain in use as an auditorium. Murals and interior décor in the auditorium are being maintained, and the contractors and **Heery International**, the project manager, are working with the State Historic Preservation Office to maintain historically significant elements.

The construction team is targeting a dry-in date of fall 2018, which will include the new gymnasium and additions to the building's west side. Completion is slated for July 2019, and students will return to the campus – which will have a capacity for 200 more students – that fall.





The building has been stripped down to its structural elements; selective demolition and abatement is approximately 80 percent complete.





Crews are pouring the rock pad for the foundation of a new two-story gymnasium.





The school's original gymnasium, which was replaced with a "new gym" built in 1956, is being converted to a two-story visual arts complex.



An employee of NorthStar demolishes concrete in the original gymnasium building.

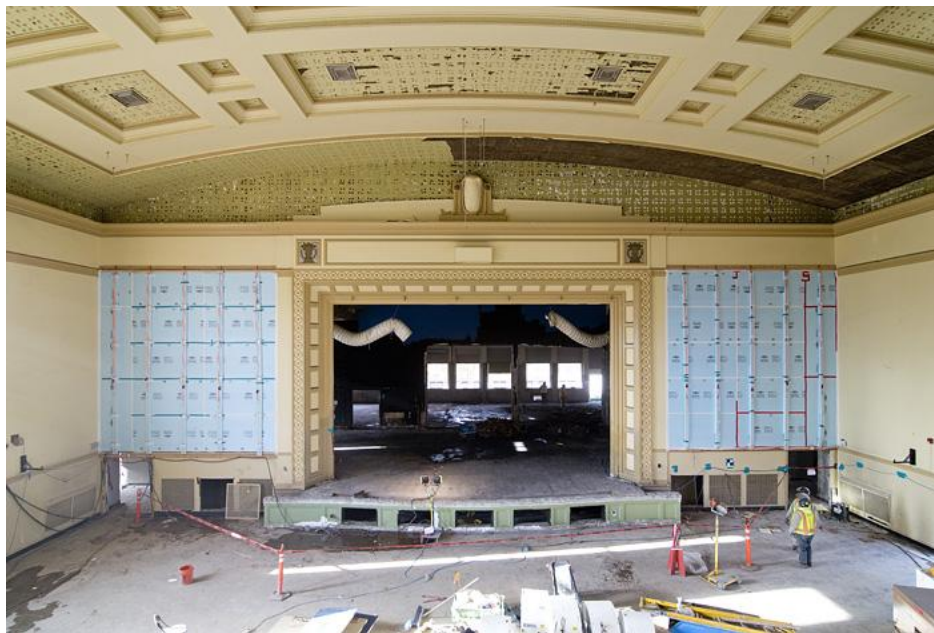


Bricks on the 1923-era gymnasium building that are in need of replacement have been marked with colored tape.



Excavation is ongoing for an expansion and courtyards on the west side of the main building.







The auditorium is being reconnected to the main building. The structures were previously connected with ramps due to a grade change, and updated connections will be ADA compliant, at even grade, and seismically braced.





Tagged with:

[ANDERSEN/COLAS CONSTRUCTION](#)[GRANT HIGH SCHOOL](#)[MAHLUM ARCHITECTS](#)[PHOTO SLIDESHOWS](#)[PPS](#)

**KEEP YOUR EMPLOYEES AND
YOUR BOTTOM LINE HEALTHY**

Get your Health Care 101 e-book

Download Here

thrive
KAISER PERMANENTE

Copyright © 2017 Daily Journal of Commerce 921 S.W. Washington St. Suite 210, Portland, OR 97205 (503)226-



1311